



FOLLOW US ON INSTAGRAM @ MDCOMMSCHOOLSCTR

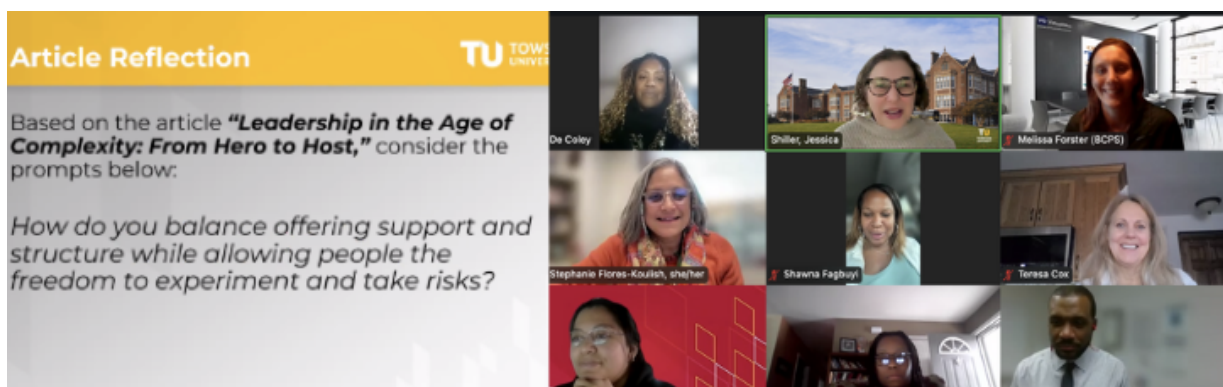
The Maryland Center for Community Schools at Towson University, in collaboration with the Maryland State Department of Education, is excited to announce our professional development initiative, **Community of Practice**, focusing on Collaborative Leadership. This initiative is designed to bring together principal and community school coordinator teams from across Maryland to engage in meaningful dialogue and capacity building around collaborative leadership.

Community of Practice Focus Areas

- **Defining Collaborative Leadership:** Gain a clear understanding of what collaborative leadership entails and its importance in our educational communities.
- **Understanding the Continuum of Collaborative Leadership and Self-Assessment:** Explore the stages of collaborative leadership and engage in self-assessment to identify strengths and areas for growth.
- **Mapping Systems:** Learn how to map out systems within your organization and the broader community to enhance collaboration and improve outcomes.
- **Navigating the Challenges of Collaboration:** Discuss common challenges in collaboration and develop strategies to overcome them effectively.

Participation Details

- **Monthly Interactive Virtual Sessions:** Principal and Coordinator will engage in interactive monthly webinars that provide valuable insights and practical tools for enhancing your collaborative leadership skills.



- **Team Mentoring:** Receive personalized consulting sessions to discuss the application of concepts learned and to promote team capacity building.
- **Regular Engagements:** The community of practice will include 6 whole-group sessions (2 in the Fall and 4 in the Spring), 6 monthly virtual individualized mentoring sessions, and optional Virtual Office Hours.